



# HUNTER - DEMPSEY - CEILING FAN WIRING AND LIGHTING GUIDE

## Wiring the Fan

**We know wiring is hard. Let's make it easier.**

Follow these steps to get your fan wired quickly and safely. Follow the route below that best matches your wall switch setup. If you are unfamiliar with wiring or uncomfortable doing it yourself, please contact a qualified electrician.

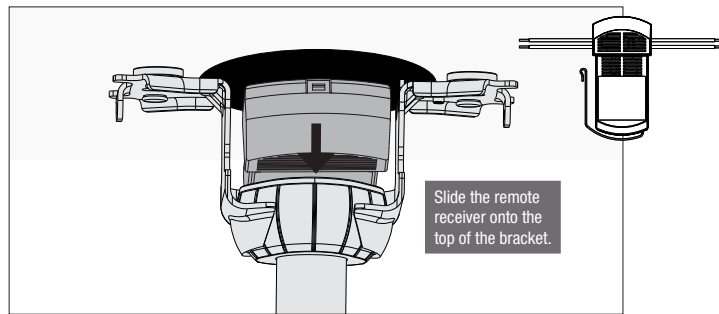
### NOTICE

The Exeter ceiling fan is designed to be operated by the included remote. Keep your switches in the "On" position to ensure proper functionality.

### Hunter Pro Tip:

**Here is how to connect the wires:**

Push the bare metal ends of the wires together and slide a wire nut over them. Then, twist the wire nut clockwise until tight. Give it a gentle pull to make sure none of the wires are loose.



**⚠ WARNING**

The ceiling fan must be grounded. If the ground wire for the installation site is not present, immediately **STOP** installation and consult a qualified electrician.

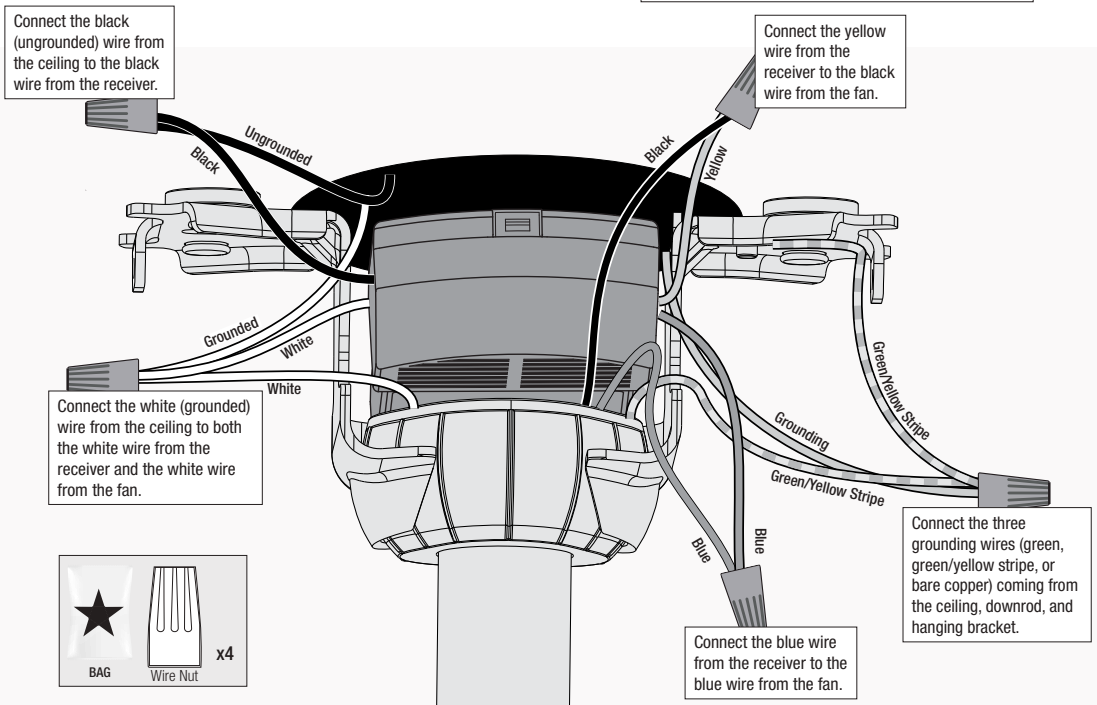
**⚠ WARNING**

All wiring must be in accordance with national and local electrical codes ANSI/NFPA 70. If you are unfamiliar with wiring or in doubt, consult a qualified electrician.

### Hunter Pro Tip:

**Have extra wiring?**

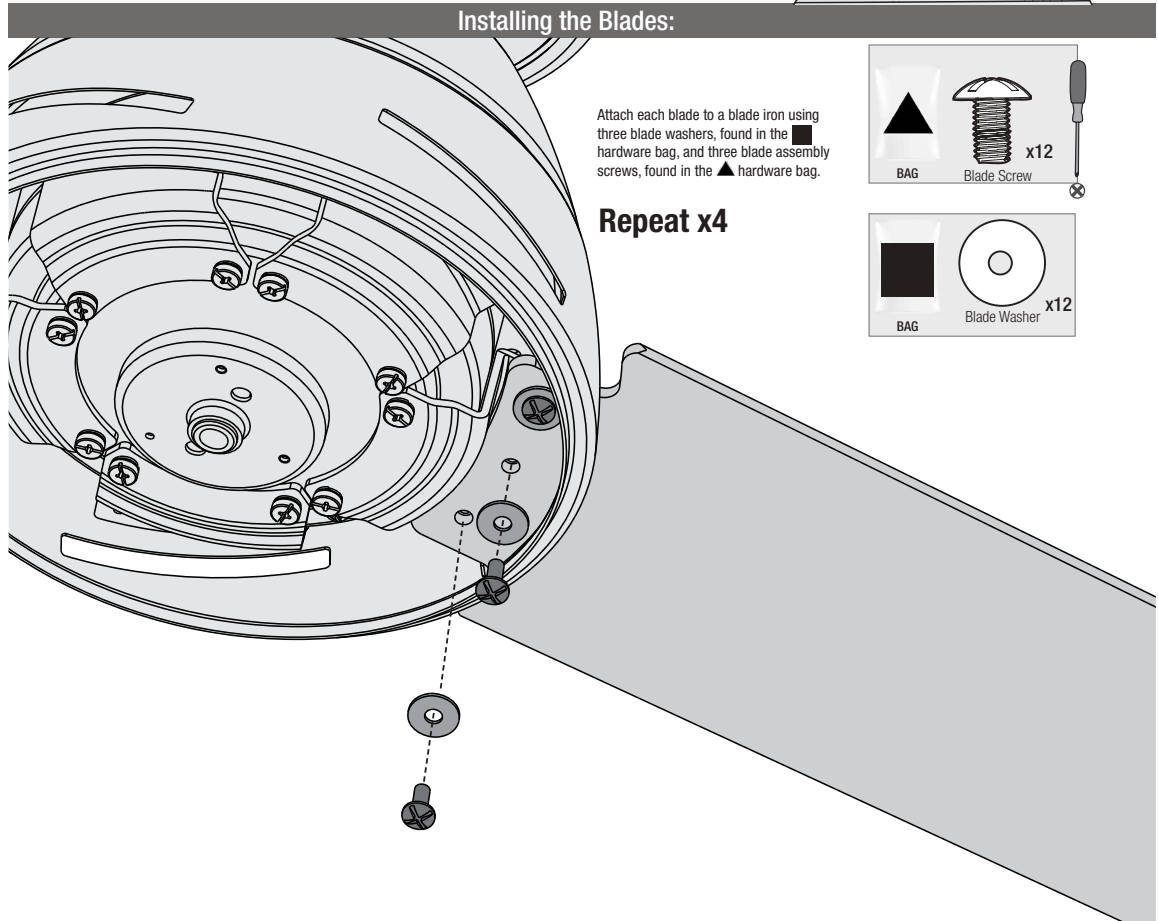
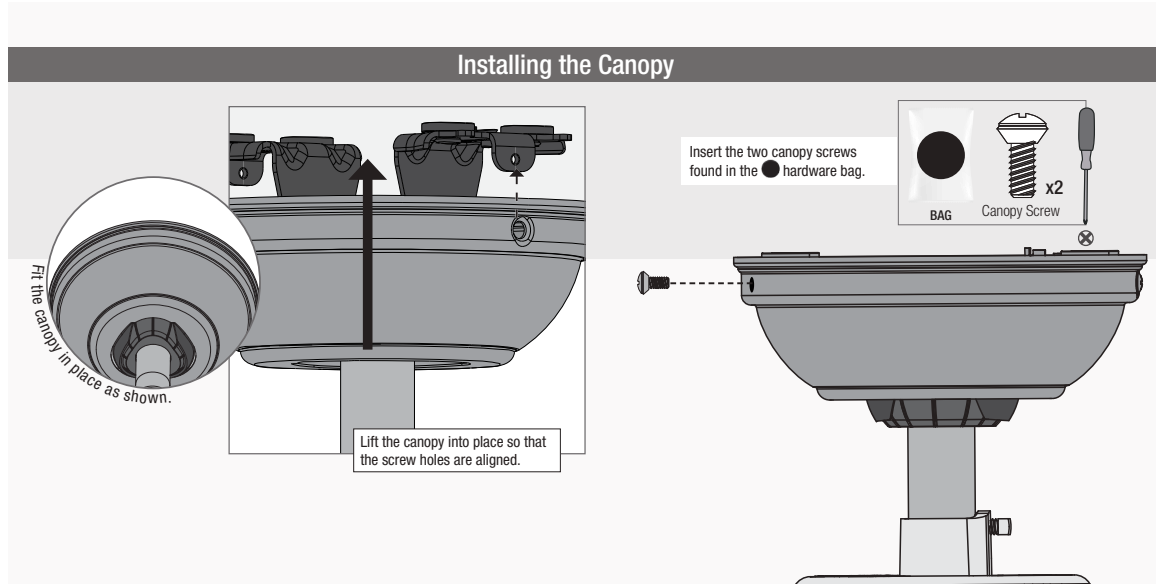
Turn the wires upward and push them carefully back through the hanger bracket into the outlet box. Spread the wires apart, with the grounded wires on one side of the outlet box and the ungrounded wires on the other side of the outlet box. Make sure that the wires are still attached to the wire nuts.



Ceiling Bracket    Hanging Fan    Wiring    Blades    Light    Remote    Trouble Shooting



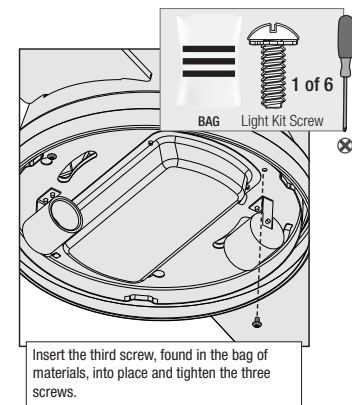
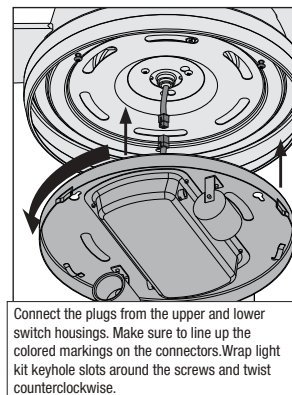
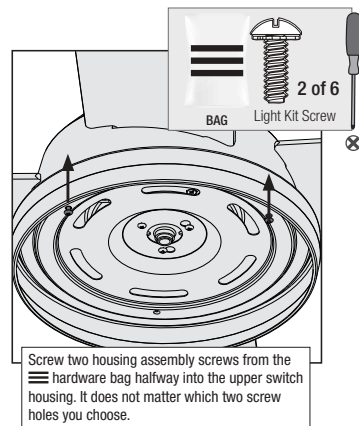
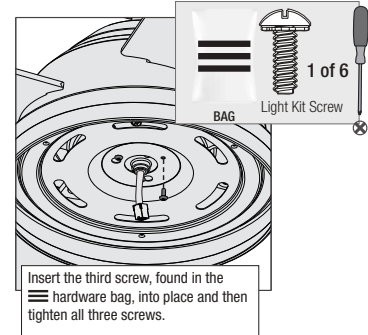
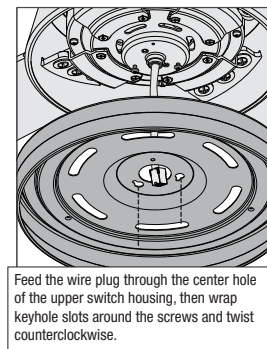
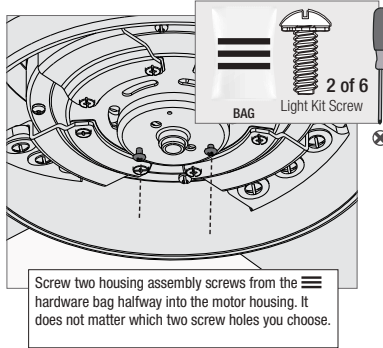
# HUNTER - DEMPSEY - CEILING FAN WIRING AND LIGHTING GUIDE



# HUNTER - DEMPSEY - CEILING FAN

## WIRING AND LIGHTING GUIDE

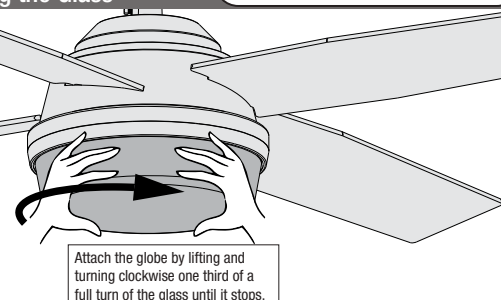
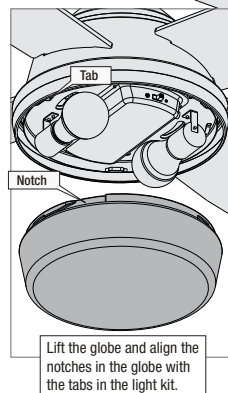
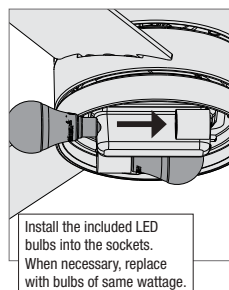
### Assembling the Light Kit



### WARNING

**FAN FALL HAZARD**  
Make sure all screws are tight to secure the light fixture.

### Installing the Glass



**NOTE:** Check to ensure proper engagement.

### WARNING

**GLASS FALL HAZARD**  
To prevent SERIOUS INJURY or DEATH, make sure that glass is properly secured.