

# HUNTER - TRIMARAN - CEILING FAN WIRING AND LIGHTING GUIDE


## Wiring the Fan

We know wiring is hard. Let's make it easier.

Follow these steps to get your fan wired quickly and safely. Follow the route below that best matches your wall switch setup. If you are unfamiliar with wiring or uncomfortable doing it yourself, please contact a qualified electrician.

You are going to need these:

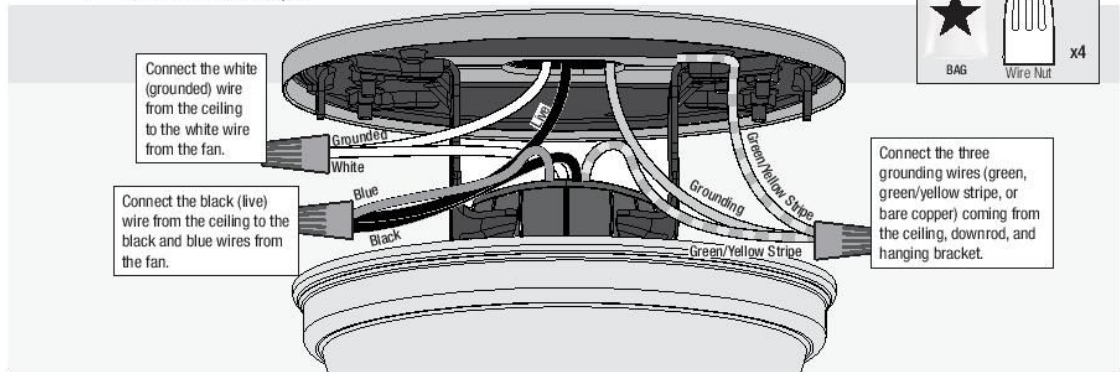
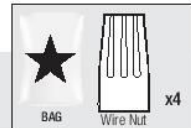
4 Wire Nuts (these are in the ★ bag)

 **Have a single switch?**  
Follow these steps:

**Hunter Pro Tip:**

**Here is how to connect the wires:**

Push the bare metal ends of the wires together and slide a wire nut over them. Then, twist the wire nut clockwise until tight. Give it a gentle pull to make sure none of the wires are loose.



**⚠ WARNING**   
The ceiling fan must be grounded. If the ground wire for the installation site is not present, immediately **STOP** installation and consult a qualified electrician.

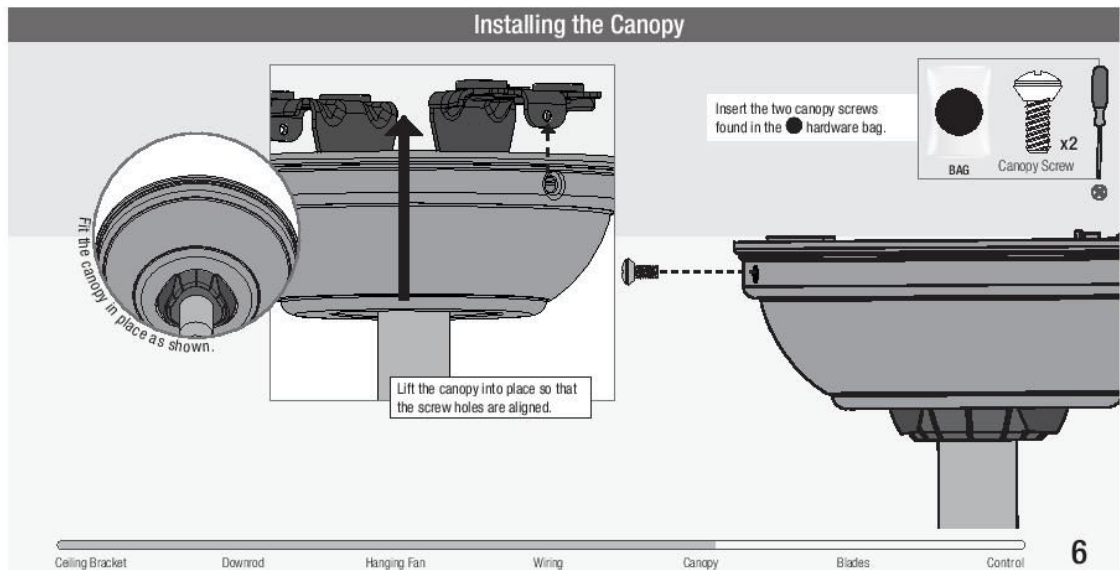
**⚠ WARNING**   
All wiring must be in accordance with national and local electrical codes ANSI/NFPA 70. If you are unfamiliar with wiring or in doubt, consult a qualified electrician.

**Hunter Pro Tip:**

**Have extra wiring?**

Turn the wires upward and push them carefully back through the hanger bracket into the outlet box. Make sure that the wires are still attached to the wire nuts.

## Installing the Canopy



Ceiling Bracket    Downrod    Hanging Fan    Wiring    Canopy    Blades    Control

# HUNTER - TRIMARAN - CEILING FAN WIRING AND LIGHTING GUIDE

## Installing the Blades

Put the blade washers found in the hardware bag onto the blade screws found in the hardware bag. Then install the blade screws to secure each blade to the fan.

**Repeat x3**

**IMPORTANT**

NOTE: Follow the instructions on the blade. Installing it incorrectly could result in your fan not functioning.

**BAG** Blade Screw x9

**BAG** Blade Washer x9

## Installing the Switch Housing and Cap

Partially install two switch housing screws, found in the hardware bag, through the gasket halfway into the motor housing as shown. It does not matter which two screw holes you choose.

Feed the wire plug through the center hole of the upper switch housing. Align the keyhole slots in the upper switch housing with the two screws you just installed. Lift the upper switch housing so that the keyhole slots engage the two screws, and twist counterclockwise to lock the upper switch housing into place.

Insert the third screw found in the hardware bag, into place and then tighten all three screws.

Lift the lower switch housing and connect the plugs. Make sure to line up the colored markings on the connectors and that the connectors latch.

Using the three short housing screws found in the hardware bag, mount the lower switch housing to the upper switch housing.

Lift the cap and align cap holes with the extend tabs of the fan housing.

Insert the cap screws found in the hardware bag .

**Note:**  
Fan style may vary.

**BAG** Switch Housing Screw 2 of 3

**BAG** Switch Housing Screw 1 of 3

**BAG** Short Housing Screw 3 of 3

**BAG** Cap Screw 4 of 4

Turn Power ON

7 Ceiling Bracket Downrod Hanging Fan Wiring Canopy Blades Control