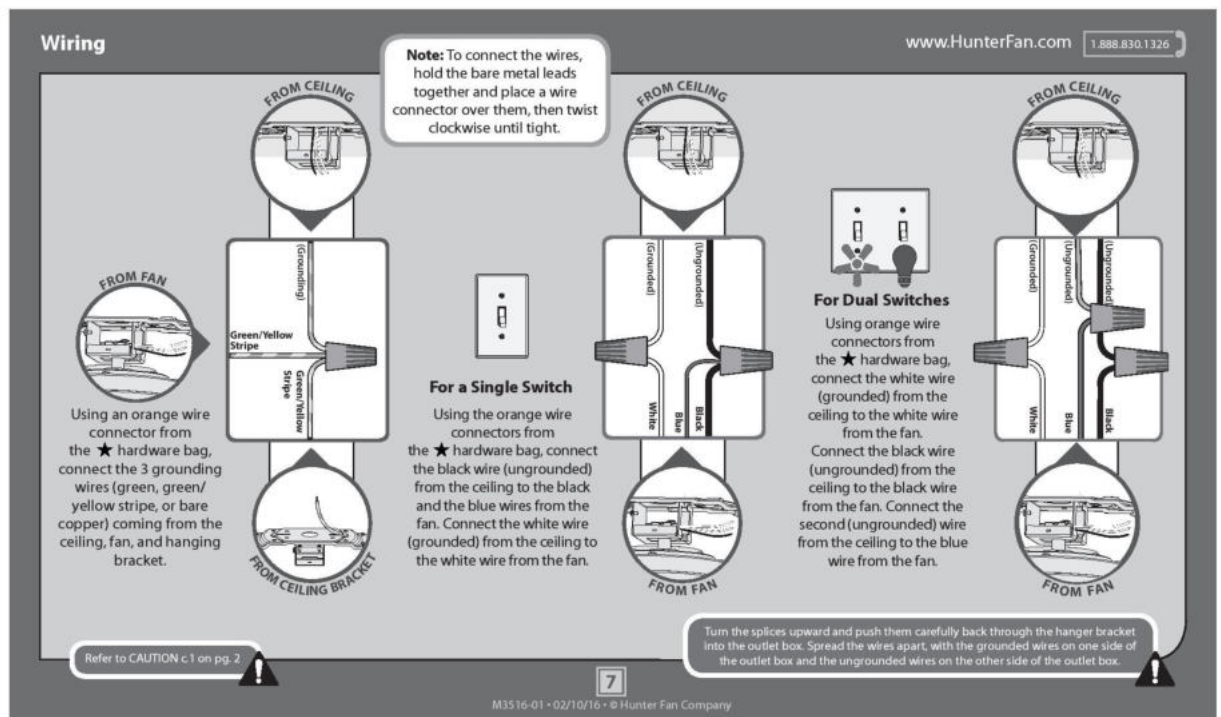




## HUNTER - LOW PROFILE III- CEILING FAN WIRING AND LIGHTING GUIDE



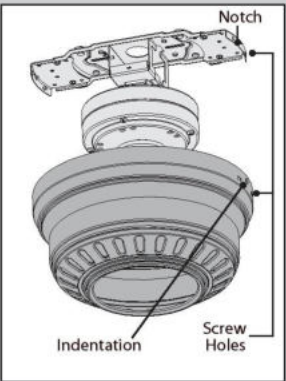
#2 Chootoo Road, South Aranguez, San Juan, Trinidad






## HUNTER - LOW PROFILE III- CEILING FAN WIRING AND LIGHTING GUIDE


**Motor Housing** [www.HunterFan.com](http://www.HunterFan.com) 1.888.830.1326



Notch  
Indentation  
Screw Holes



Motor Housing Screw



With a Phillips head screwdriver, install the four motor housing screws found in the ● hardware bag. Tighten all four screws securely.

8

M3516-01 • 02/10/16 • © Hunter Fan Company

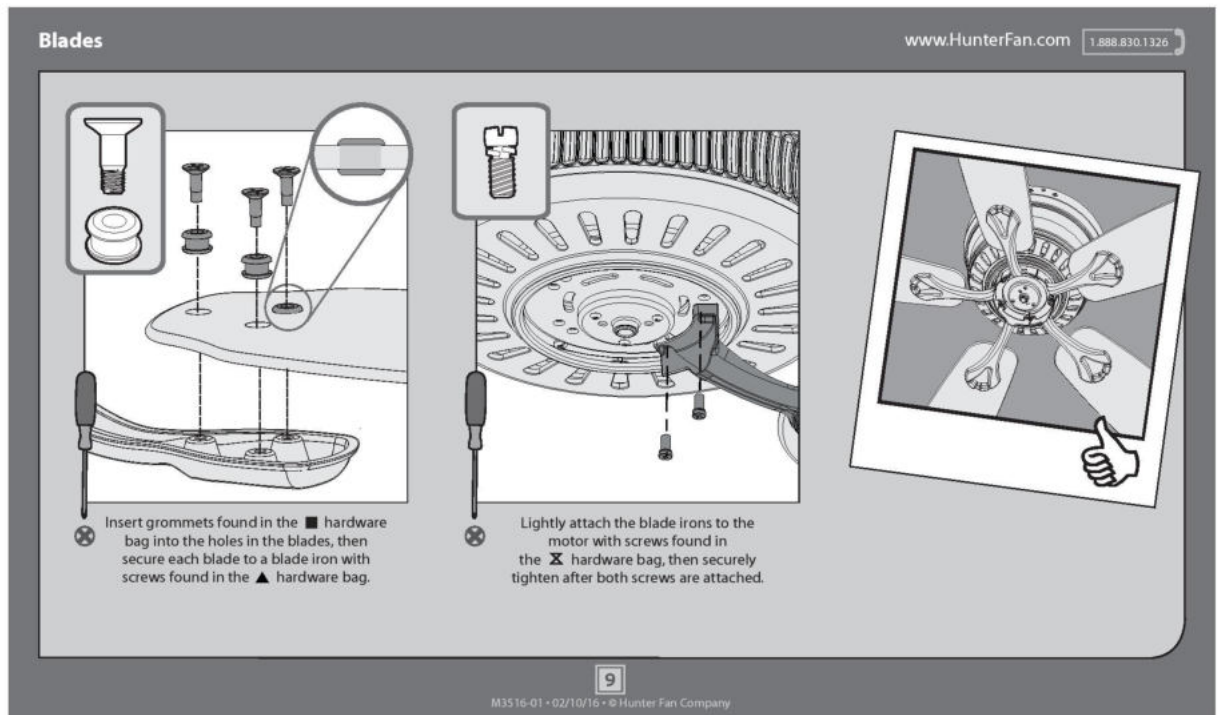


#2 Chootoo Road, South Aranguéz, San Juan, Trinidad





## HUNTER - LOW PROFILE III- CEILING FAN WIRING AND LIGHTING GUIDE



#2 Chootoo Road, South Aranguéz, San Juan, Trinidad

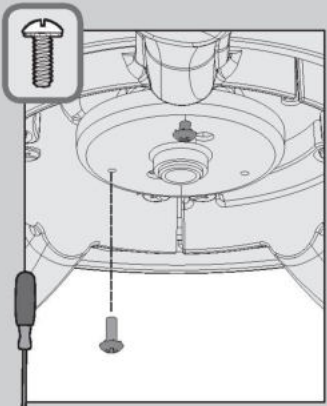


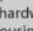


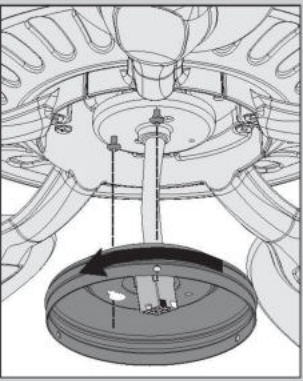
## HUNTER - LOW PROFILE III- CEILING FAN WIRING AND LIGHTING GUIDE

Switch Housing

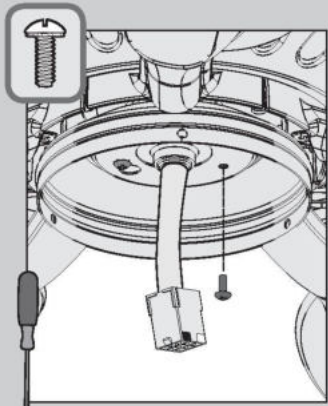
www.HunterFan.com 1.888.830.1326

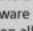


✳️ Screw two (2) housing assembly screws from the  hardware bag halfway into the motor housing. It does not matter which two screw holes you choose.



Feed the wire plug through the center hole of the upper switch housing, then wrap keyhole slots around the screws and twist counterclockwise.



✳️ Insert the third screw, found in the  hardware bag, into place and then tighten all three (3) screws.

Make sure the upper switch housing is securely attached to the mounting plate. Failure to properly secure all three assembly screws could result in the switch housing fixture falling.

10

M3516-01 • 02/10/16 • © Hunter Fan Company



#2 Chootoo Road, South Aranguéz, San Juan, Trinidad





## HUNTER - LOW PROFILE III- CEILING FAN WIRING AND LIGHTING GUIDE

Light Kit

www.HunterFan.com 1.888.830.1326

Switch Housing Screw

Partially install two of the switch housing screws found in the bag. Connect the plugs from the upper and lower switch housings. Make sure to line up the colored markings on the connectors.

Switch Housing Screw

Notch

Align the notches in the sides of the lower switch housing with the upper switch housing screws. Lift the lower switch housing. Twist the lower switch housing clockwise to lock into place.

Install the third switch housing screw. Tighten all three screws securely.

**Want to install your fan without a light kit?**  
Go to [www.HunterFan.com/FAQs](http://www.HunterFan.com/FAQs) and click "How do I install my fan without the light kit?"

Make sure the lower switch housing is securely attached to the upper switch housing. Failure to properly secure all three assembly screws could result in the light fixture falling.

11

M3516-01 • 02/10/16 • © Hunter Fan Company



#2 Chootoo Road, South Aranguéz, San Juan, Trinidad

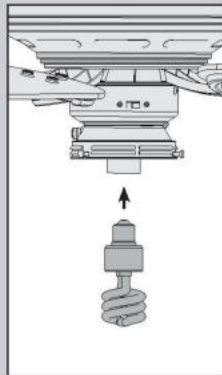




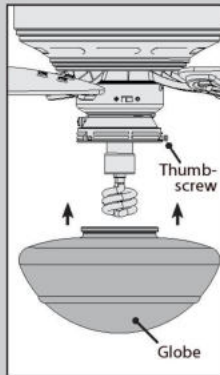
## HUNTER - LOW PROFILE III- CEILING FAN WIRING AND LIGHTING GUIDE

### Light Kit (continued)

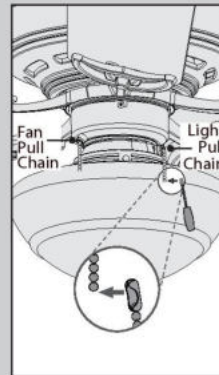
www.HunterFan.com 1.888.830.1326



Install a CFL bulb (19-watt maximum).



Loosen the thumbscrews. Insert the globe into the fixture and retighten the thumbscrews securely. Do not overtighten.



Connect the appropriate pull chain pendant to each of the short chains coming from the switch housing. The fan pull chain controls the speed: from high to off. The light pull chain controls the light fixture: on and off.



See next page for fan operation instructions. ➔

12

M3516-01 • 02/10/16 • © Hunter Fan Company



#2 Chootoo Road, South Aranguez, San Juan, Trinidad

