



HUNTER - ADVOCATE - CEILING FAN WIRING AND LIGHTING GUIDE

Wiring the Fan

We know wiring is hard. Let's make it easier.

Follow these steps to get your fan wired quickly and safely. Follow the route below that best matches your wall switch setup. If you are unfamiliar with wiring or uncomfortable doing it yourself, please contact a qualified electrician.

You are going to need these:

4 Wire Nuts (these are in the ★ bag)



Have a single switch?
Follow these steps:

Connect the white (grounded) wire from the ceiling to the white wire from the fan.

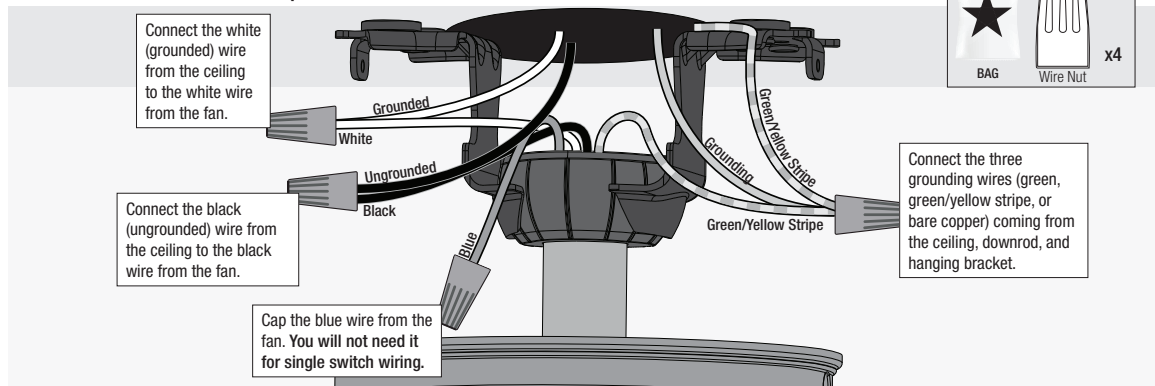
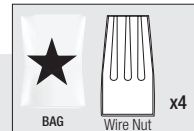
Connect the black (ungrounded) wire from the ceiling to the black wire from the fan.

Cap the blue wire from the fan. You will not need it for single switch wiring.

Hunter Pro Tip:

Here is how to connect the wires:

Push the bare metal ends of the wires together and slide a wire nut over them. Then, twist the wire nut clockwise until tight. Give it a gentle pull to make sure none of the wires are loose.



Hunter Pro Tip:

Have extra wiring?

Turn the wires upward and push them carefully back through the hanger bracket into the outlet box. Make sure that the wires are still attached to the wire nuts.

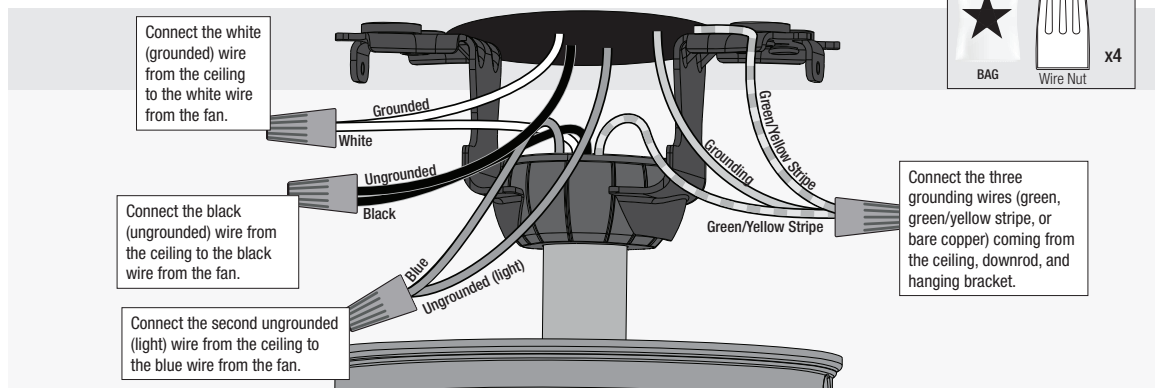
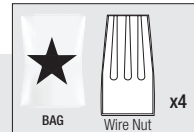


Have dual switches?
Follow these steps:

Connect the white (grounded) wire from the ceiling to the white wire from the fan.

Connect the black (ungrounded) wire from the ceiling to the black wire from the fan.

Connect the second ungrounded (light) wire from the ceiling to the blue wire from the fan.



Need a little more help* with wiring?

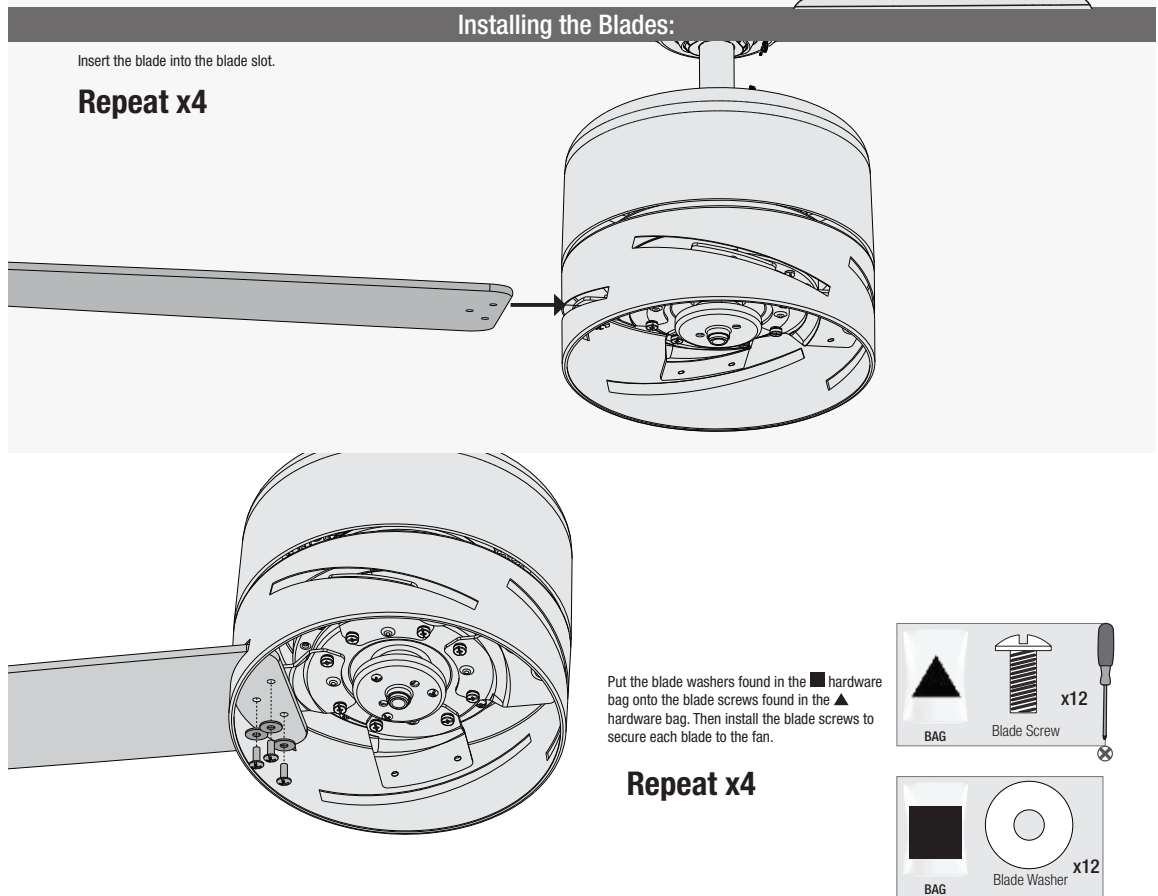
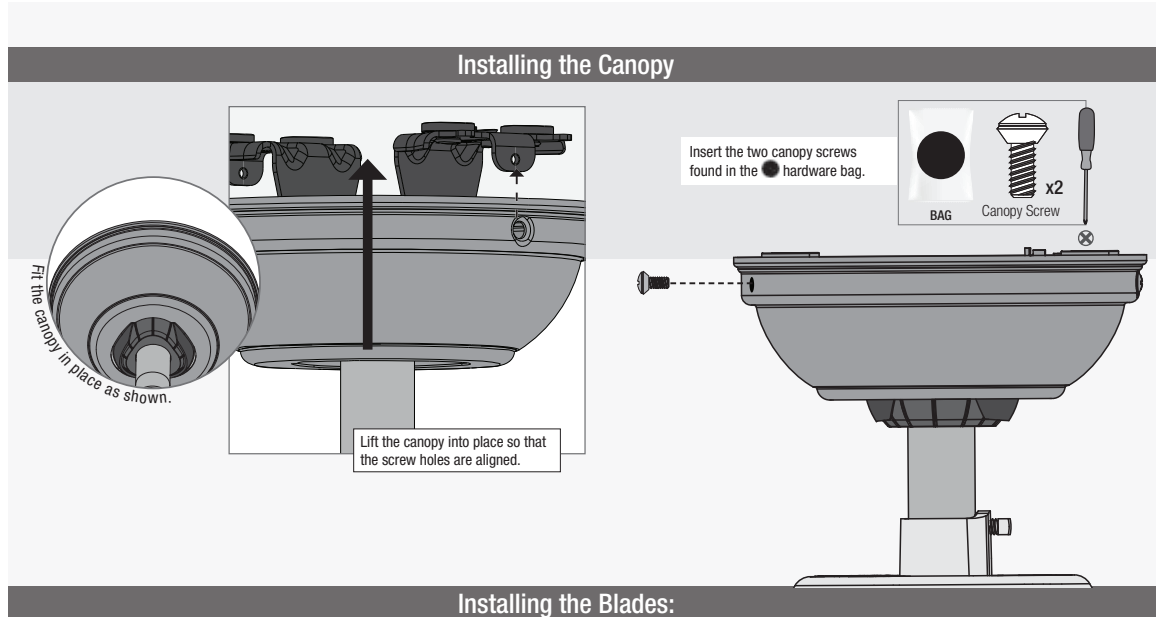
Visit our wiring video at: <http://bit.ly/WireYourFan>

*Fan style and features shown may vary.





HUNTER - ADVOCATE - CEILING FAN INSTALLATION GUIDE



7

Ceiling Bracket

Downrod

Hanging Fan

Wiring

Canopy

Blades

Light

Remote

App

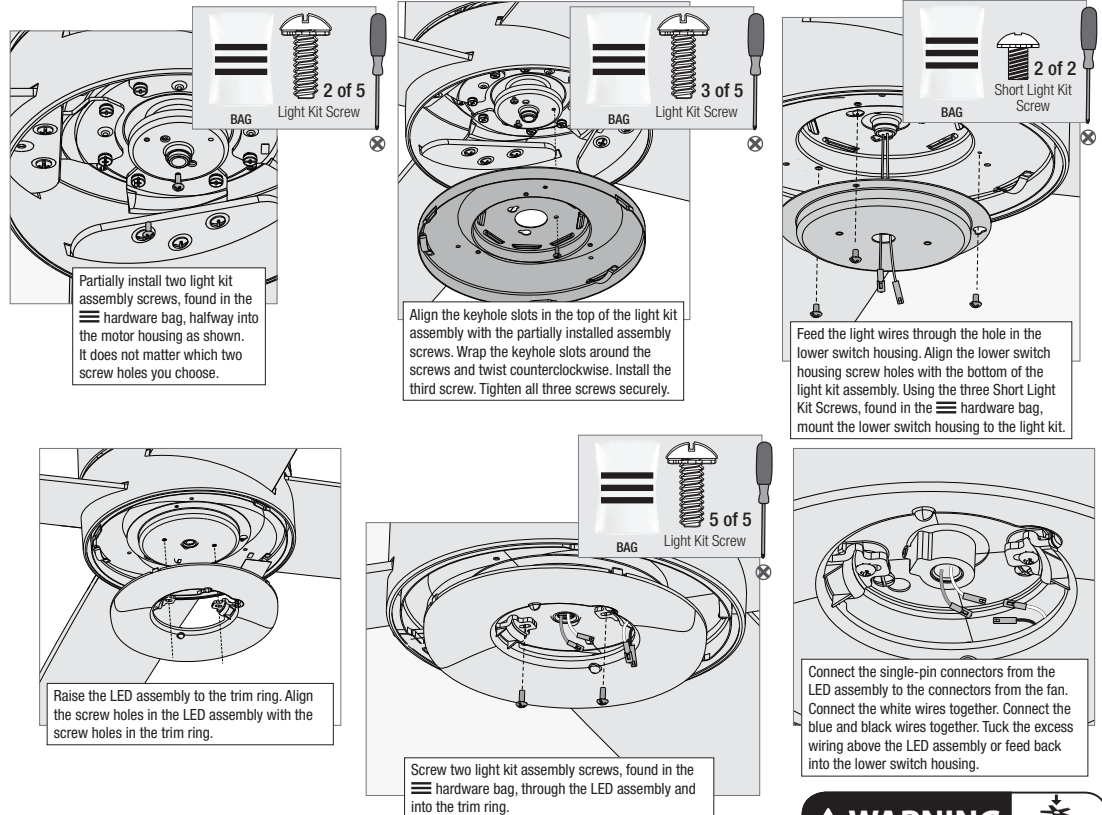


#2 Chootoo Road, South Aranguez, San Juan, Trinidad



HUNTER - ADVOCATE - CEILING FAN INSTALLATION GUIDE

Assembling the Light Kit

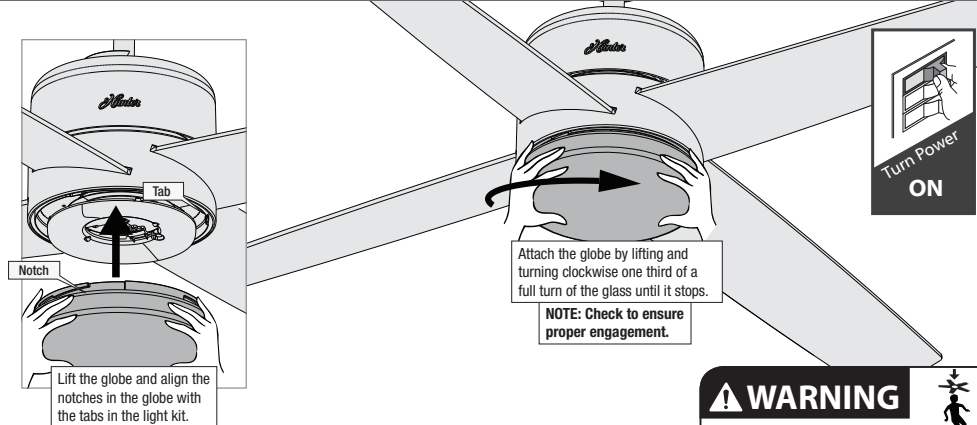


WARNING

FAN FALL HAZARD
Make sure all screws are tight to secure the light fixture.



Installing the Glass



WARNING

GLASS FALL HAZARD
To prevent SERIOUS INJURY or DEATH, make sure that glass is properly secured.

