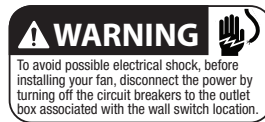
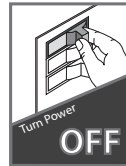




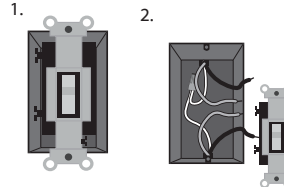
HUNTER - PRESTO - CEILING FAN ACCESSORIES GUIDE

Installing Wall Control

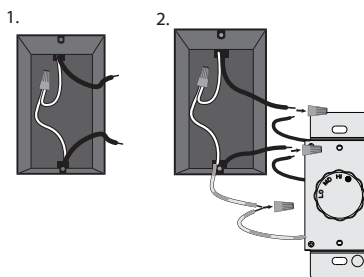
- 1 Turning off the power**
Ensure the power is OFF at the outlet box and wall switch location before proceeding with installation.



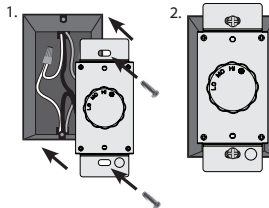
- 2 Preparing the Wall Switch**
After removing the switch plate cover, remove all wiring from the switch.



- 3 Wiring the Wall Control**
Using the wire connectors, connect each black wire from the wall control to a black wire from the switch box. Connect the green with yellow stripe wire to the grounding wire from the switch box.
Note: If two white wires are present in the switch box, connect them to each other if they are not already connected.



- 4 Installing the Wall Control**
Insert the wall control into the outlet box and secure the two metal tabs to the tabs on the switch box using the two flat head screws that came with the switch box.



- 5 Installing the Wall Plate**
Remove the knob from the wall control and mount the faceplate (**not included**) to the wall control using the two #6-32 screws you removed earlier from the faceplate.



- 6 Installing the Wall Plate (CONT)**
Reattach the knob onto the wall control and turn it to the left for the OFF position.



- 7 Turning on the power**

